



AIP SUPPLEMENT  
SWEDEN

AIP AIRAC SUP 35/2010 12 AUG
EFFECTIVE 23 SEP 2010

---

LFV, SE-601 79 NORRKÖPING. Phone +46 11 19 20 00. Fax +46 11 19 25 75. AFTN ESKLYAYT

---

All times in UTC

**SUP 35/2010. STOCKHOLM/ARLANDA (ESSA) – REVISED PROCEDURE RWY 26**

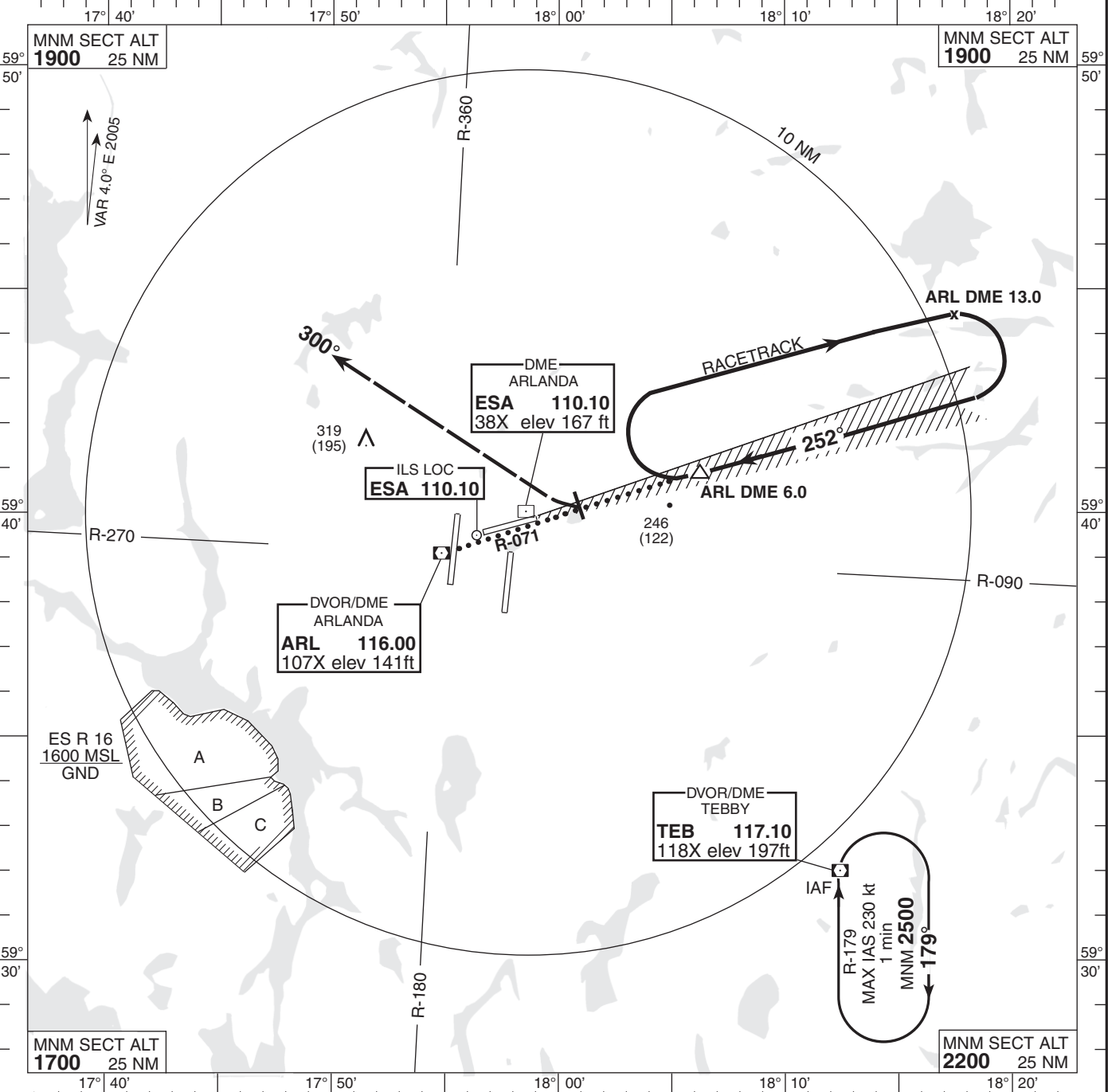
With effect from **23 SEP 2010**. Outer Marker (OM) and Middle Marker (MM) RWY 26 are withdrawn and replaced by DME ESA. Procedure VOR/DME+ILS 26 is hereby revised.

Attached revised procedure ESSA-VOR/DME+ILS 26 is effective from the same date.

– E N D –

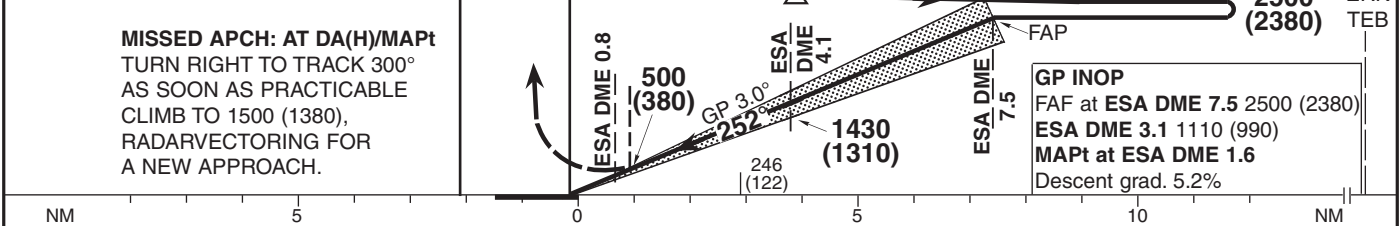


**INSTRUMENT APPROACH CHART-ICAO**  
**THR ELEV 124 ft, AD ELEV 137 ft**  
**ARLANDA TOWER 128.725/118.500/125.125**  
**ATIS ARR 119.000**  
**STOCKHOLM CONTROL 123.750**  
**AD 2-ESSA-5-9**  
**VOR/DME+ILS 26 STOCKHOLM/ARLANDA SWEDEN**



TRANSITION ALTITUDE 5000 MSL ILS RDH (53) PAPI GP 3.0° (5.2%) SPECIAL COM FAILURE PROCEDURES SEE ESSA AD 2.22  
 \* TIMING NOT AUTHORIZED FOR DEFINING THE MAPt MISSED APCH TURN LIMITED TO MAX IAS 185 KT

OM replaced by **ESA DME 4.1**  
 MM replaced by **ESA DME 0.8**



OCA (H)					Final approach	GP INOP Distance FAF-MAPt 5.9 NM*						
Cat of ACFT	A	B	C	D	Distance	ESA DME 7	ESA DME 6	ESA DME 5	ESA DME 4	ESA DME 3		
Straight-in	Cat I	430 (310)	460 (340)	490 (370)	500 (380)	2350 (2230)	2030 (1910)	1710 (1590)	1390 (1270)	1080 (950)		
	GP INOP	500 (380)				Speed	kt	80	100	120	140	160
					Rate of descent	ft/min	425	530	635	745	850	955