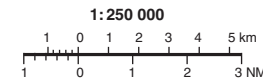


INSTRUMENT APPROACH CHART-ICAO

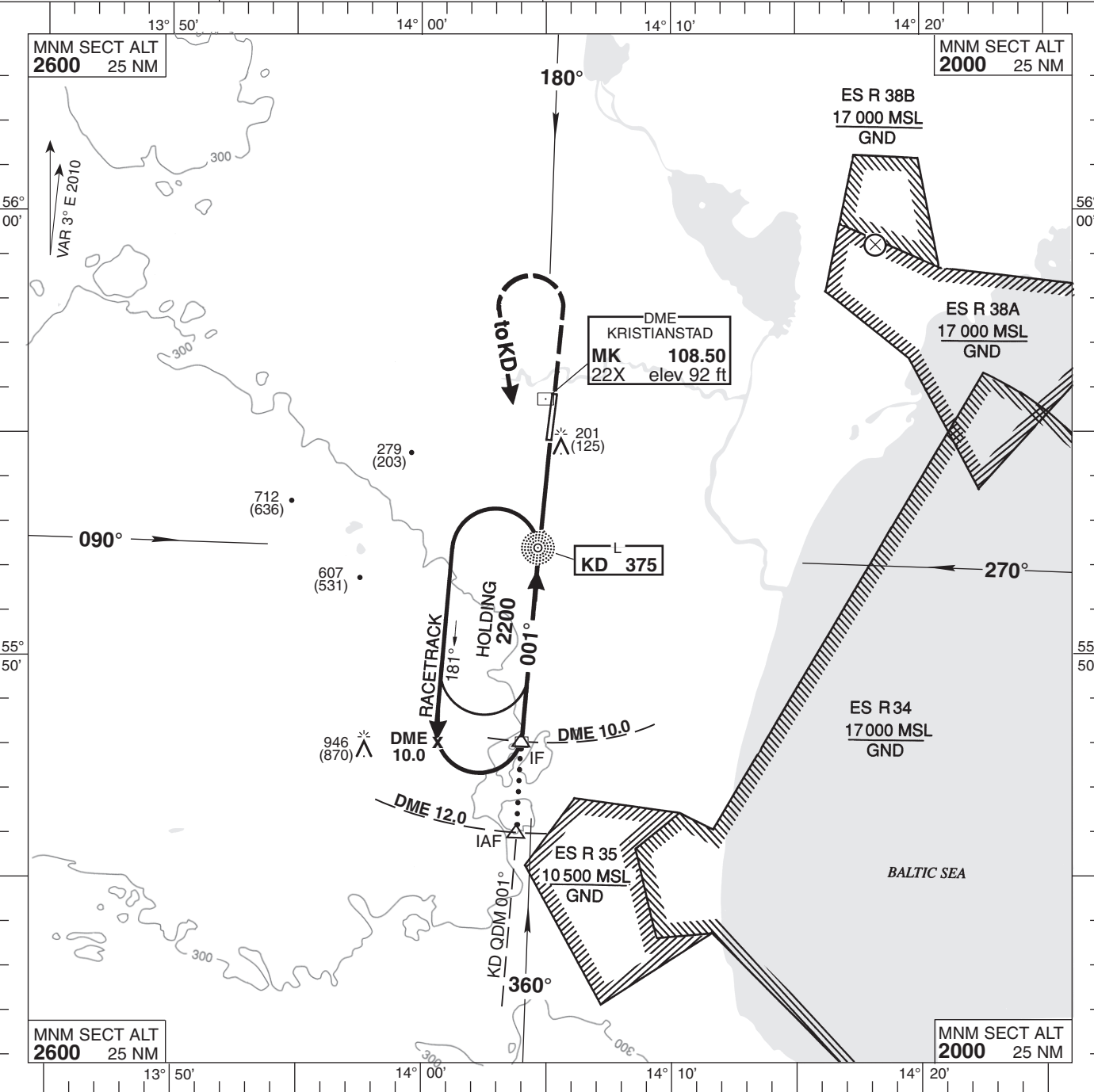


THR ELEV 76 ft, AD ELEV 76 ft
HGT are related to THR.
Circling HGT are related to AD ELEV.
BRG are MAG.
ALT, HGT and ELEV in ft.

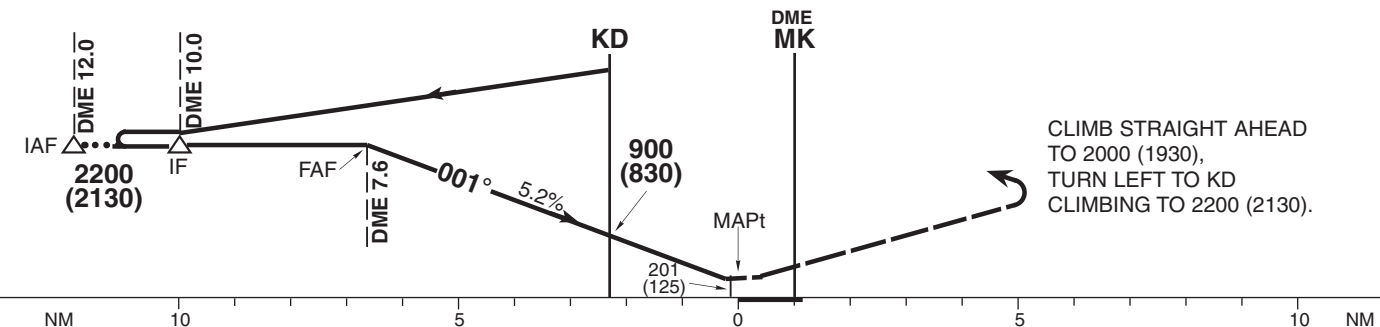
KRISTIANSTAD TOWER
129.350

AD 2-ESMK-5-3

NDB+DME 01
KRISTIANSTAD
SWEDEN



TRANSITION ALTITUDE 5000 MSL PAPI GP 5.2% FINAL APCH LINE OFFSET 3° FM QFU 004°



Cat of ACFT	OCA (H)				Final approach						
	A	B	C	D	Distance	DME 7	DME 6	DME 5	DME 4	DME 3	
Straight-in	450 (380)				Distance FAF-MAPt 6.57 NM						
Circling	500 (430)	580 (510)	1010 (940)	1110 (1040)	2020(1940)	1700(1620)	1380(1310)	1070(990)	750(680)		
Circling E RWY	500 (430)	580 (510)	940 (870)	940 (870)	Speed	kt 80	100	120	140	160	180
					Time	min:s 4:56	3:57	3:17	2:49	2:28	2:12
					Rate of descent	ft/min 422	527	632	738	843	948