

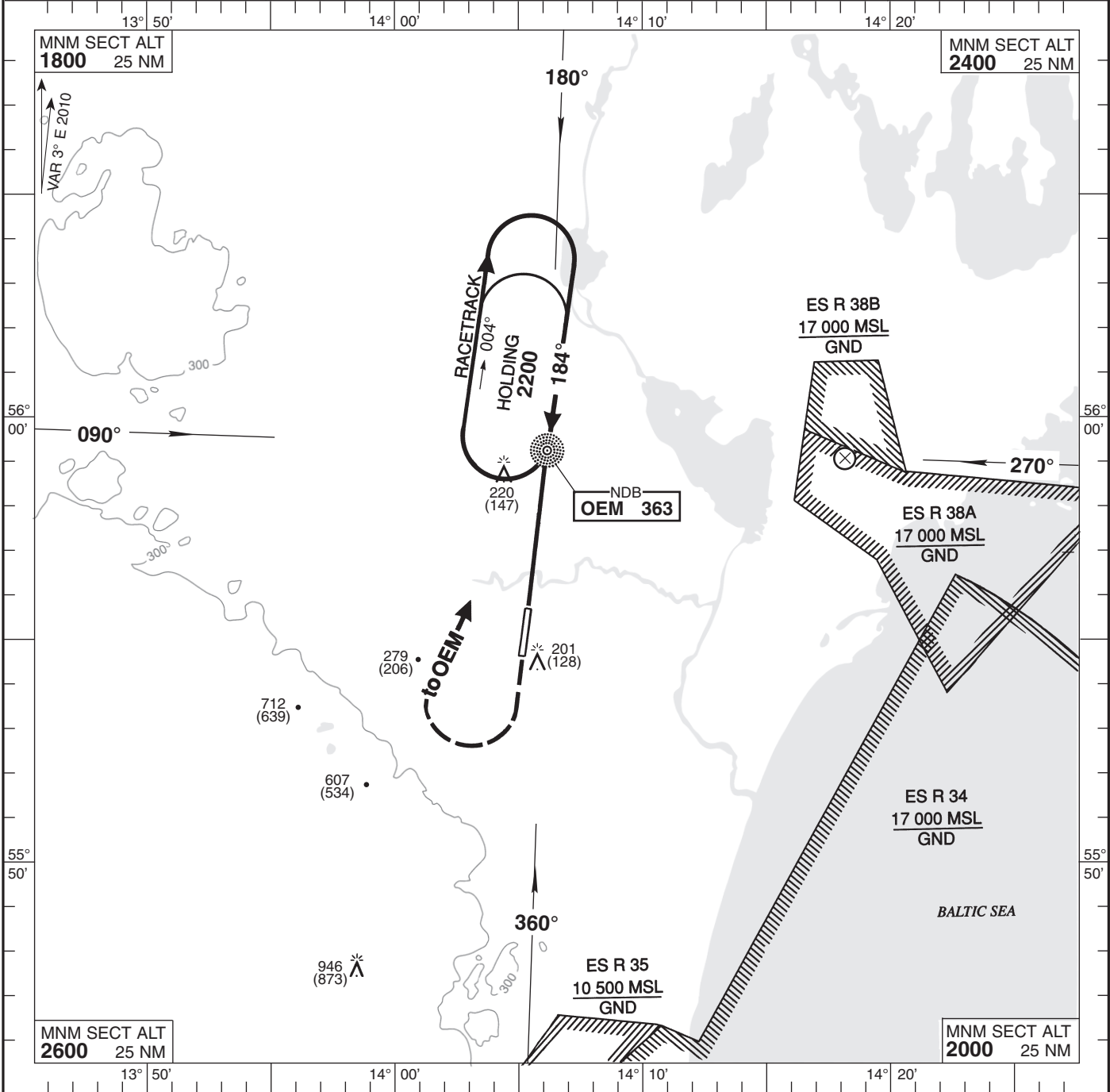
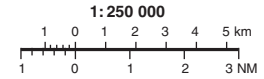
AD 2-ESMK-5-2

**KRISTIANSTAD TOWER**  
129.350

**THR ELEV 73 ft, AD ELEV 76 ft**  
HGT are related to THR.  
Circling HGT are related to AD ELEV.  
BRG are MAG.  
ALT, HGT and ELEV in ft.

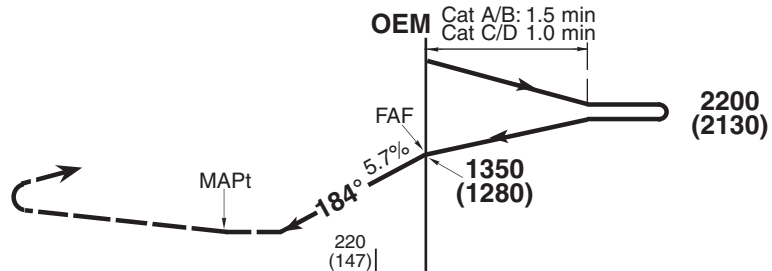
INSTRUMENT  
APPROACH CHART-ICAO

**NDB 19**  
**KRISTIANSTAD**  
**SWEDEN**



TRANSITION ALTITUDE 5000 MSL PAPI GP 5.7%

CLIMB STRAIGHT AHEAD  
TO 2000 (1930),  
TURN RIGHT TO OEM  
CLIMBING TO 2200 (2130).



Cat of ACFT	OCA (H)				Distance FAF-MAPt 3.53 NM							
	A	B	C	D	DME 3		DME 2		DME 1			
Straight-in	470 (390)				1170(1100) 820(750) 480(400)							
Circling	500 (430)	580 (510)	1010 (940)	1110 (1040)	kt	80	100	120	140	160	180	
Circling E RWY	500 (430)	580 (510)	940 (870)	940 (870)	min:s	2:38	2:07	1:45	1:30	1:19	1:10	
					Rate of descent	ft/min	461	577	692	808	923	1039

**ESMK-NDB 19**  
**14 JAN 2010**

AMDT 122/2009

CHANGE: Circling revised

The LFV Group