

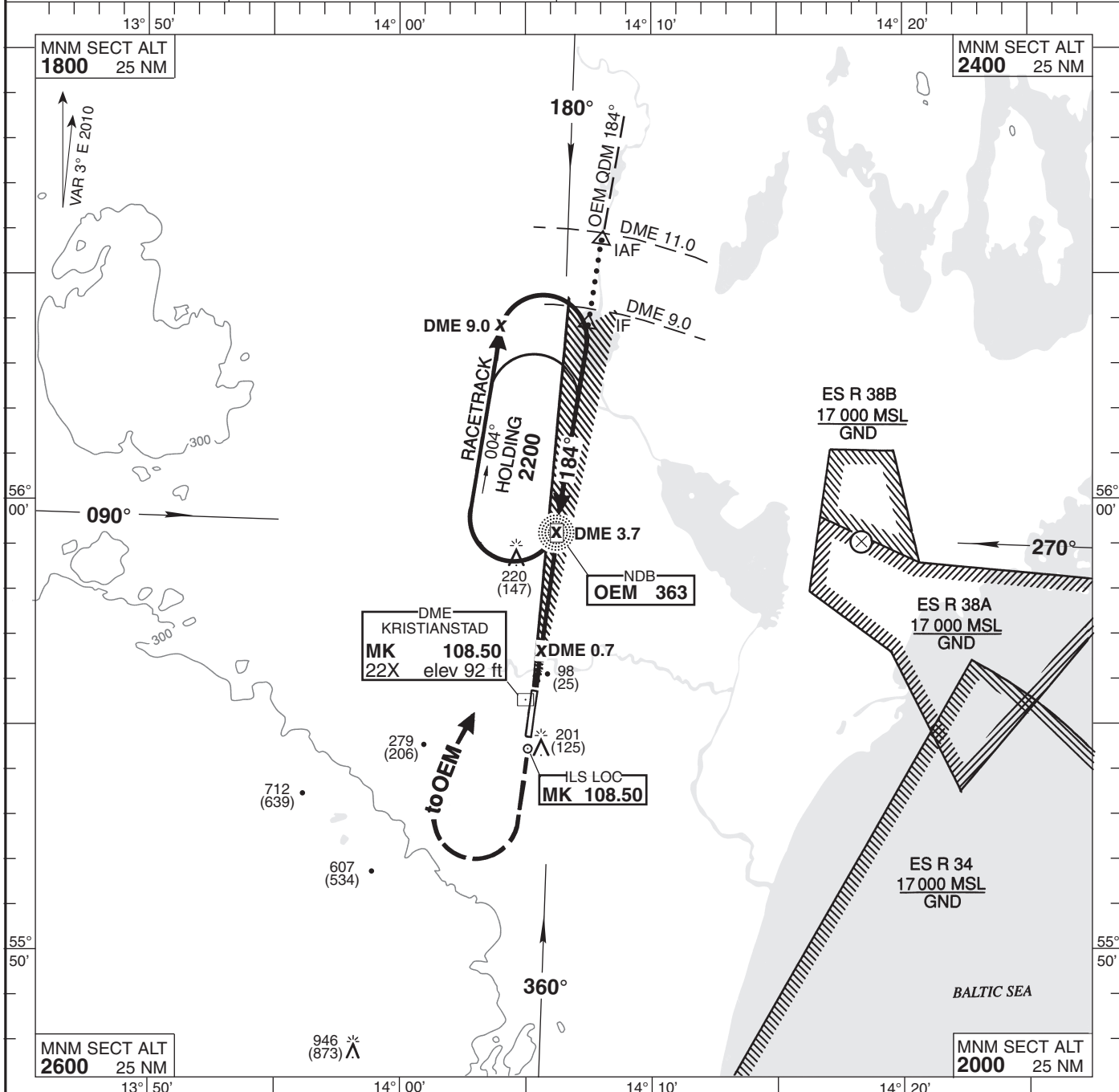
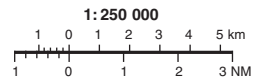
INSTRUMENT APPROACH CHART-ICAO

THR ELEV 73 ft, AD ELEV 76 ft
HGT are related to THR.
Circling HGT are related to AD ELEV.
BRG are MAG.
ALT, HGT and ELEV in ft.

KRISTIANSTAD TOWER
129.350

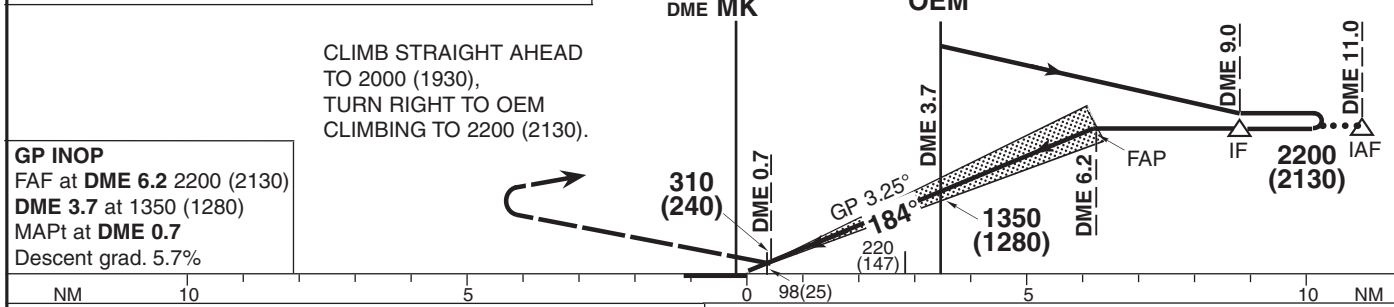
AD 2-ESMK-5-1

NDB+DME+ILS 19
KRISTIANSTAD
SWEDEN



TRANSITION ALTITUDE 5000 MSL | ILS RDH (52) | PAPI GP 3.25° (5.7%) *TIMING NOT AUTHORIZED FOR DEFINING THE MAPt

OM REPLACED BY DME 3.7 MM REPLACED BY DME 0.7



CLIMB STRAIGHT AHEAD TO 2000 (1930),
TURN RIGHT TO OEM
CLIMBING TO 2200 (2130).

GP INOP
FAF at **DME 6.2** 2200 (2130)
DME 3.7 at 1350 (1280)
MAPt at **DME 0.7**
Descent grad. 5.7%

OCA (H)					Final approach							
Cat of ACFT	A	B	C	D	GP INOP Distance FAF-MAPt 5.5 NM *							
Straight-in	Cat I	215 (142)	224 (151)	234 (161)	247 (174)	Distance	DME 6	DME 5	DME 4	DME 3	DME 2	
	GP INOP	470 (400)				ALT (HGT)	2150(2080)	1800(1730)	1460(1390)	1110(1040)	760(690)	
Circling	500 (430)	580 (510)	1010 (940)	1110 (1040)	Speed	kt	80	100	120	140	160	180
Circling E RWY	500 (430)	580 (510)	940 (870)	940 (870)	Rate of descent	ft/min	460	575	690	805	920	1035