

VISUAL APPROACH CHART - ICAO

1:250000



AD ELEV 59 FEET

ELEV and ALT in ft MSL 643
HGT in ft above AD ELEV (584)

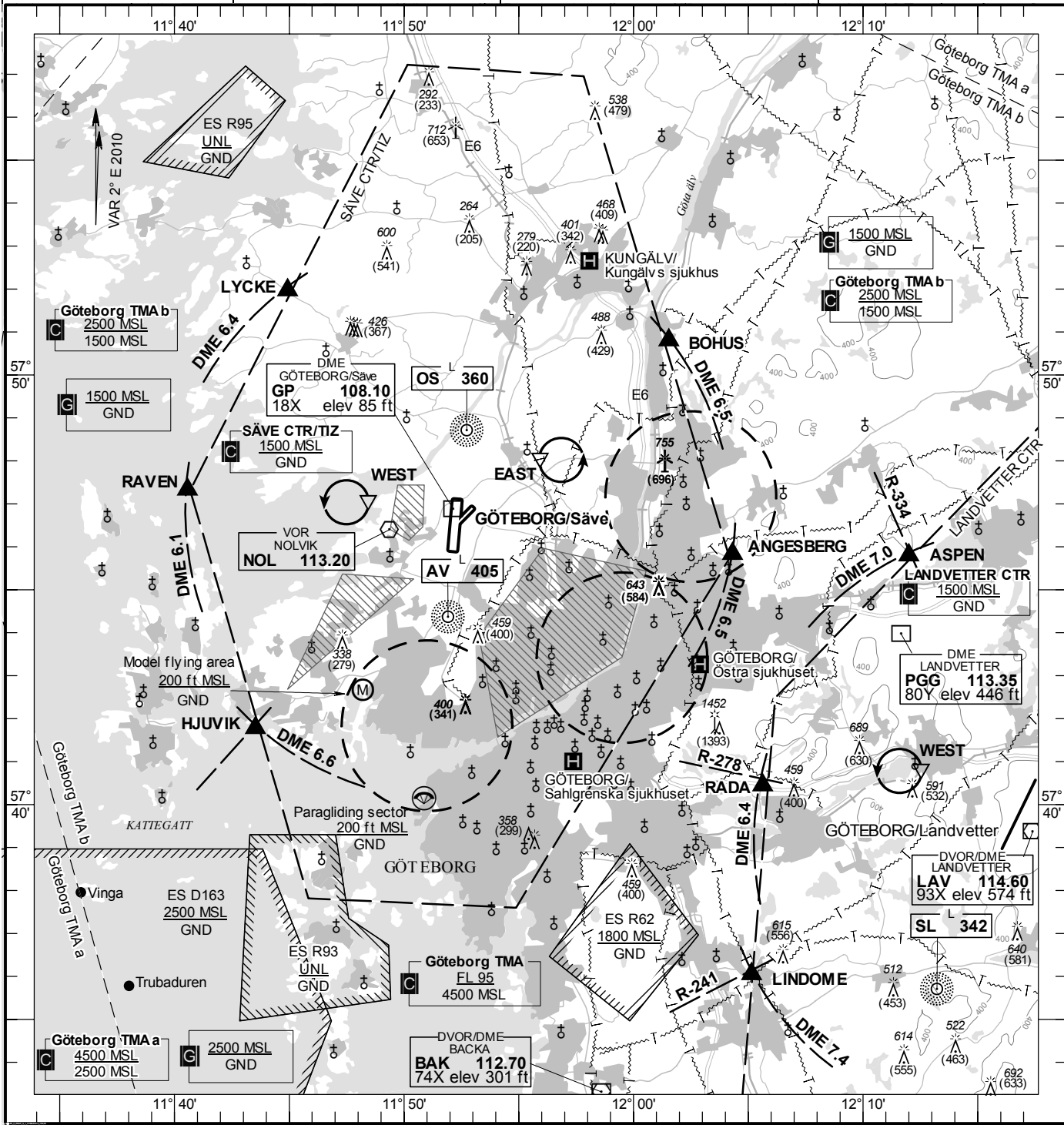
TA 5000 MSL

SÄVE TOWER/INFORMATION

119.050 123.250 129.100

AD 2 ESGP 6-1

**GÖTEBORG/Säve
SWEDEN**



Communication failure

- 1 SQUAWK 7600
- 2 Enter CTR via ANGESBERG – Holding EAST or via RAVEN – Holding WEST at or below 1500 ft MSL to traffic circuit. Transmit blind your intentions.
- 3 Flash LDG-lights and watch TWR for optical signals.

Remark

Obstacle below 197 ft AGL not shown in CTR.
Noise sensitive area, to be avoided

RWY	THR	PAPI
NR	ELEV	(MEHT)
01	57 ft	Left/3.15° (51 ft)
19	48 ft	Left/3.00° (56 ft)
04	56 ft	NIL
22	59 ft	NIL

Entry / exit point

LYCKE	575157N 0114456E
BOHUS	575047N 0120132E
ANGESBERG	574549N 0120419E
HJUVIK	574146N 0114332E
RAVEN	574719N 0114034E

Holding

WEST: Hold west of Nolvik over the sea, west of point 574702N 0114826E
EAST: Hold over powerline west of road E6, east of point 574801N 0115556E

Legend

See GEN 2.3

LFV

CHANGE: Obst

AIRAC AMDT 7/2011 **15 DEC 2011**